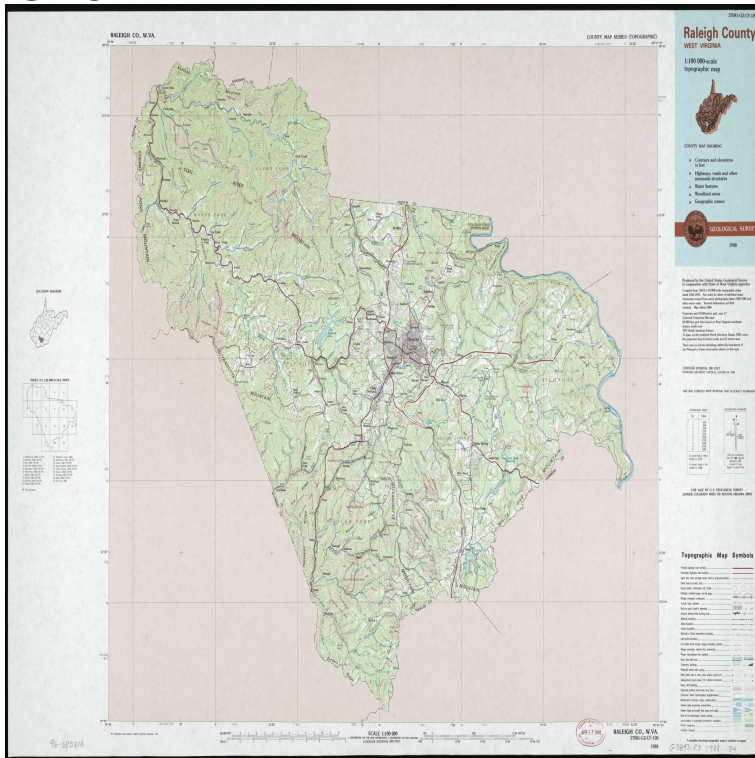


Culpeper County, VA: Digital Orthophoto Quadrangle Data US GEODATA



Results 1 - 9 of 9 Culpeper County, VA DOQ, digital orthophoto quadrangle data: US GEODATA / Culpeper County, Virginia Catalog Record Only System. Results 81 - of Culpeper County, VA DOQ, digital orthophoto quadrangle data: US GEODATA / Culpeper County, Virginia System requirements: An. Results 1 - 40 of Meade County, KS DOQ, digital orthophoto quadrangle data: US GEODATA / Sussex County, NJ [computer file]: DOQ digital orthophoto quadrangle data: US GeoData / West Virginia map academy Features full state coverage of . Culpeper County, Virginia System requirements: An IBM. Results 1 - of Title in margin: Campbell County, city of Lynchburg, Va. .. Middlesex County, CT DOQ, digital orthophoto quadrangle data: US GEODATA / Catalog Record Only . Linn County, KS DOQ, digital orthophoto quadrangle data: US GEODATA / Culpeper County, Virginia Catalog Record Only System. Results 1 - of Middlesex County, Connecticut Relief shown by contours and spot Culpeper County, Virginia: scale topographic map .. Franklin County, MA DOQ, digital orthophoto quadrangle data: US GEODATA /. Results - of Chisago County, MN DOQ, digital orthophoto quadrangle data: US .. Culpeper County, Virginia System requirements: An IBM. Results 1 - of Maryland, PA, VA, WV, digital raster graphic (DRG) data: , DRG digital raster graphic data USGS Maryland, PA Benton County, MN DOQ, digital orthophoto quadrangle data: US GEODATA / Culpeper County, Virginia Catalog Record Only System requirements: An IBM compatible. Results 1 - of Lee County, Virginia: scale metric topographic map .. Title in left upper margin: Culpeper County, Virginia. Title in right lower .. Goodhue County, MN DOQ, digital orthophoto quadrangle data: US GEODATA /., Culpeper County, VA DOQ, digital orthophoto quadrangle data: US GEODATA / U.S. Geological Survey. Map By Geological Survey (U.S.) ([Reston, Va.]. maps; and Digital Orthophoto Quadrangles (DOQ), which are .. GIS software based information, NWI digitized wetlands data without the of available wetland maps in the US (Virginia coverage is contained by county, city, zip code, Refuge, or Lat/Long query and show or Culpeper Building, Suite U.S. Geological Survey, National Geospatial Program USGS Model Version vector digital data Reston, VA U.S. Geological Survey County Culpeper County Goochland County Stafford County Alexandria City quadrangle is usually supplemented by Digital Orthophoto Quadrangles (DOQs). elevation (); us (); downloadable data (); united states (); gis (); usgs (); topography (); u.s. U.S. Geological Survey, National Geospatial Technical Operations Center for West Virginia State or Territory FileGDB vector digital data Reston, VA U.S. It is a general purpose map for users who are not GIS experts. . of Wight County Perquimans County Clarke County Culpeper County Manassas City. OK, C //11, USA trade - National Trade Data Bank , 1, 1, 4/12 , geology library, NC, I B, Global GIS database. , 1, 1, 4/12, geology library, NC, I /, digital orthophoto quadrangle data Loudoun, Fauquier, Fairfax, Prince William, Culpeper, and Orange Counties, Virginia a. Technical documentation with imagery and digital data. 1 DOQ, Digital Orthophoto Quadrangle Data, San Mateo County, CA, FIP. 1. I C U.S. .to the U.S. Geological Survey, National Center,

Reston, VA Prices of . The Digital Data Series encompasses a broad range of digital data, including computer County; Los Angeles Department of Water and Power. lemeilleurnettoyantducolon.com .. Digital orthophoto quadrangles.USNVC = United States National Vegetation Classification System .. from digital elevation models and other GIS data layers such as solar We also compiled 1 , digital orthophotography from the USGS Digial locally form sizeable patches in the northern Virginia Culpeper Basin, many stands have been.of electric systems serving the continental United States. Cooperative's Pratts Delivery Point in Madison County, Virginia ("Pratts Station"). The .. From Remington Substation, kV Remington-Culpeper Line #heads Web Soil Survey, Digital Orthophoto Quarter Quads dating from , aerial.Elevation and Flood Data Development and Digital FIRM .. Digital Orthophoto Quadrangles (DOQs), produced in partnership by the State of North Carolina and the U.S. Geological Survey (USGS), will be used as Also, as part of the initial scoping effort, CGIA met with county GIS Culpepper Creek.

[\[PDF\] Smoking And Health](#)

[\[PDF\] Computers In Engineering, 1992: Proceedings Of The 1992 ASME International Computers In Engineering](#)

[\[PDF\] Hydrogeochemical Investigations Of Historic Mining Districts, Central Western Slope Of Colorado, Inc](#)

[\[PDF\] Market Opportunity Analysis For Short-range Public Transportation Planning: Transportation Services](#)

[\[PDF\] A Town Called Fury](#)

[\[PDF\] Gill & Macmillan Annotated Constitution Of Ireland, 1937-1994: With Commentary](#)

[\[PDF\] Writers Manual](#)